

PRODUCT INFORMATION PACKET

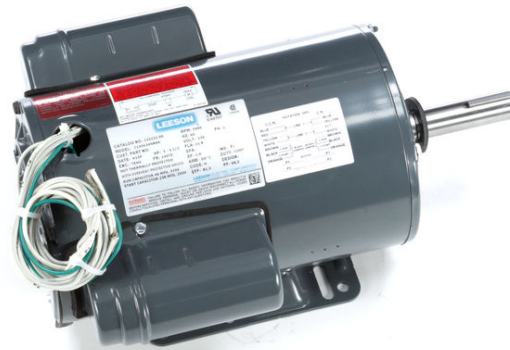


Model No: C145K34NB6A

Catalog No: 122122.00

3-4.5HP.3600RPM.145TZ.TEAO.230V.1PH.60HZ.CONT.50C.1.0SF.RIGID.CROP DRYER.

Crop Dryer



Regal and Leeson are trademarks of Regal Beloit Corporation or one of its affiliated companies.

©2018 Regal Beloit Corporation, All Rights Reserved. MC017097E





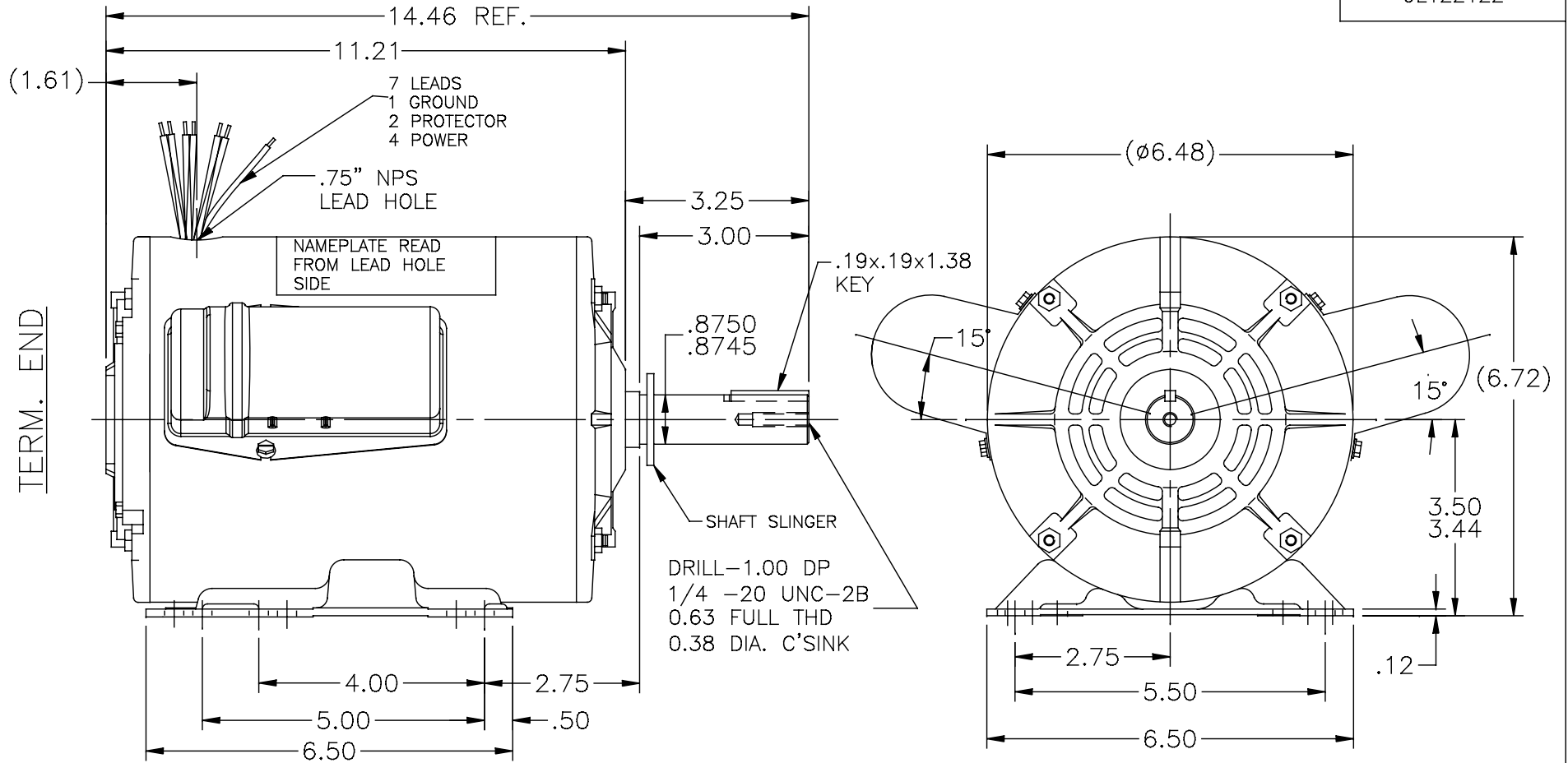
Nameplate Specifications

Output HP	3 Hp	Output KW	2.2 kW
Frequency	60 Hz	Voltage	230 V
Current	11.8 A	Speed	3490 rpm
Service Factor	1	Phase	1
Efficiency	81.3 %	Duty	Continuous
Insulation Class	F	Design Code	NO DESIGN CODE
KVA Code	H	Frame	145TZ
Enclosure	Totally Enclosed Non Ventilated	Overload Protector	No
Ambient Temperature	50 °C	Drive End Bearing Size	6205
Opp Drive End Bearing Size	6203	UL	Recognized
CSA	Y	CE	N
IP Code	43		

Technical Specifications

Electrical Type	Capacitor Start Capacitor Run	Starting Method	Across The Line
Poles	2	Rotation	Selective Counterclockwise
Mounting	Rigid base	Motor Orientation	HORIZONTAL
Drive End Bearing	BALL	Opp Drive End Bearing	BALL
Frame Material	Rolled Steel	Shaft Type	Single Special Extension
Overall Length	14.46 in	Frame Length	9.56 in
Shaft Diameter	0.875 in	Shaft Extension	3.25 in
Assembly/Box Mounting	F1 ONLY		
Outline Drawing	OL122122	Connection Diagram	A-102006-150LE

OL122122



LEAD DESCRIPTION:
LEAD LENGTH OF ALL LEADS TO BE 30"

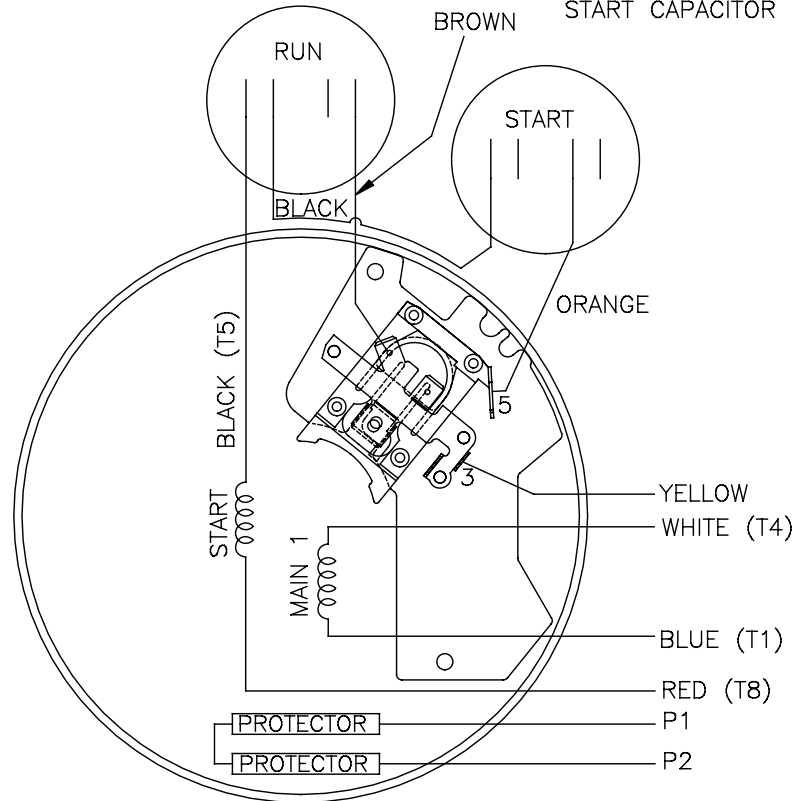
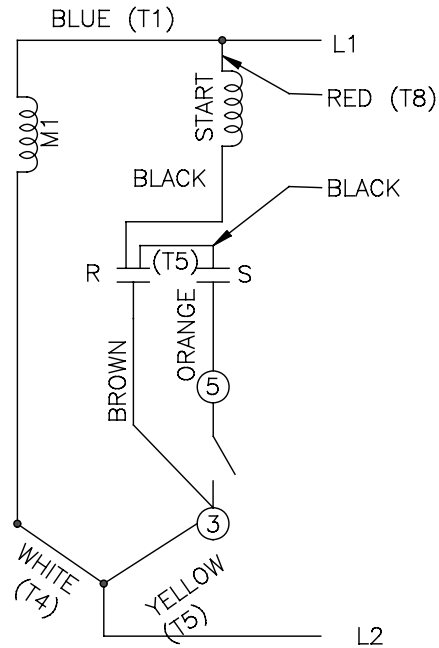
				TOLERANCES UNLESS SPECIFIED		ELECTRIC MOTORS GEARMOTORS AND DRIVES	DRAWN	SAJ 7/8/15			
				DEC.	INCHES		CHK				
				.X	±.1		APPD	VS 7/8/15			
				.XX	±.03	TITLE OUTLINE 140FR. -TEAO-BB	SCALE	3=8			
				.XXX	±.005		REF	OL121965			
A	NEW DRAWING	SAJ	7/8/15	VS	.XXXX ±.0005	MAT'L.	FMF				
NO.	REVISION	BY & DATE	CHK	ANG	±7'30"	FINISH	PREV				
THIS DRAWING IN DESIGN AND DETAIL IS OUR PROPERTY AND MUST NOT BE USED EXCEPT IN CONNECTION WITH OUR WORK ALL RIGHTS OF DESIGN AND INVENTION ARE RESERVED THIS IS AN ELECTRONICALLY GENERATED DOCUMENT - DO NOT SCALE THIS PRINT				RFP		CAD FILE	OL122122	SIZE	DRAWING NO.	PAGE OF	REV.
				DIST	WP	A	OL122122	A			A

102006-150LE

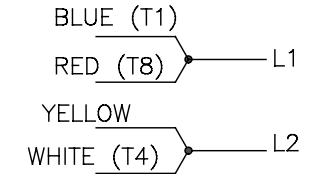
HIGH VOLTAGE:
CAPACITOR START CAPACITOR RUN
NO OVERLOAD SELECT ROTATION.

RUN CAPACITOR SILVER METAL CANISTER
START CAPACITOR BLACK PLASTIC PHENOLIC.

HIGH VOLTAGE. C.C.W.



HIGH VOLT. C.C.W. ROT.



FOR C.W. ROTATION
INTERCHANGE RED
(T8) AND YELLOW

				TOLERANCES UNLESS SPECIFIED		ELECTRIC MOTORS GEARMOTORS AND DRIVES	DRAWN VS 3/8/2012			
				DEC.	INCHES		CHK	APPD		
				.X	±.1	TITLE CONNECTION DIAGRAM	SCALE	2=1		
02	REMOVED "REMOTE MOUNTED RUN & START CAPACITOR"	SAJ	09/02/15	SKM	.XXX		±.005	REF	102006-57	
01	ISAAC 12-2061 REVISED NOTATION CAPACITOR...	DWH	05/16/2012	DWH	.XXXX		±.0005	FMF		
NO.	REVISION	BY & DATE	CHK	ANG	±7'30"		FINISH	PREV	EXSPR112637	
THIS DRAWING IN DESIGN AND DETAIL IS OUR PROPERTY AND MUST NOT BE USED EXCEPT IN CONNECTION WITH OUR WORK ALL RIGHTS OF DESIGN AND INVENTION ARE RESERVED THIS IS AN ELECTRONICALLY GENERATED DOCUMENT - DO NOT SCALE THIS PRINT				RFP	CAD FILE 102006-150LE		SIZE	DRAWING NO.	PAGE 1 OF 1	REV.
				DIST	LB	A	102006-150LE		02	

